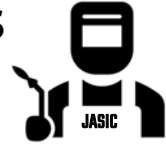


CSA Approved 105A Synergic GAS/GASLESS MIG Welding Machine



The VIPERMIG 105i is a brand new Inverter Welder that takes advantage of the latest IGBT Technology. This Synergic Machine automatically matches the optimum parameters once the wire diameter is selected to provide you with an excellent welding performance! Lightweight , portable and complete with Torch, Regulator and Gasless wire. This versatile little machine is ideal for the D.I.Y , Home Workshop and Farm!



Technical Data:

INPUT VOLTAGE :AC 115 +- 15%
OUTPUT CURRENT: 40-105A
NO LOAD VOLTAGE: 46V
EFFICIENCY: 85%
POWER FACTOR: 0.74
INSULATION : B
WEIGHT: 13 POUNDS
DUTY CYCLE: 20%@105A
DIMENSIONS: 14" X 5.2" X 9.85"

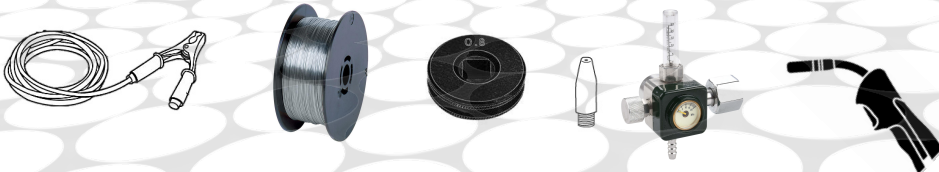


Key Features:

- ❖ LATEST IGBT TECHNOLOGY
- ❖ SYNERGIC GAS/GASLESS
- ❖ LIGHTWEIGHT AND POWERFUL
- ❖ COMPACT AND PORTABLE
- ❖ 115V INPUT
- ❖ COMPLETE WITH TORCH AND REGULATOR
- ❖ GASLESS WIRE INCLUDED
- ❖ SPARE ROLLER AND CONTACT TIP
- ❖ 12 MONTHS WARRANTY
- ❖ SOLENOID AS STANDARD



VIPERMIG 105i Comes complete with:



CODE: VMIG105i